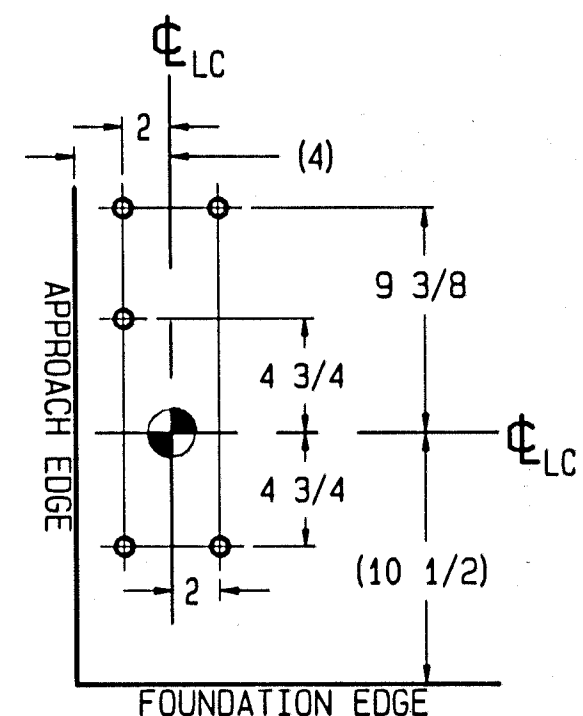
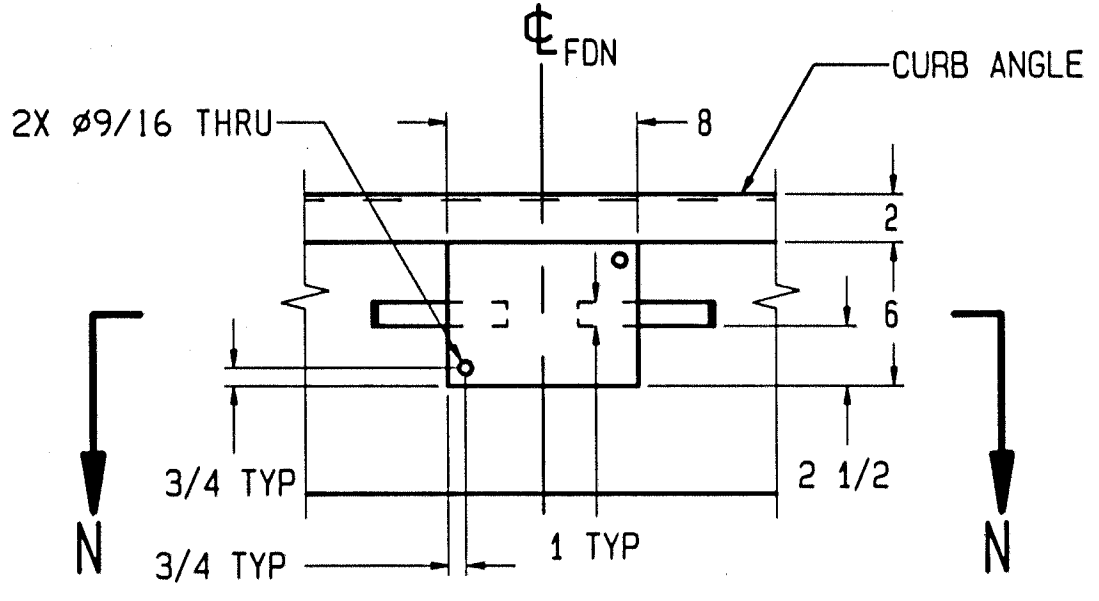


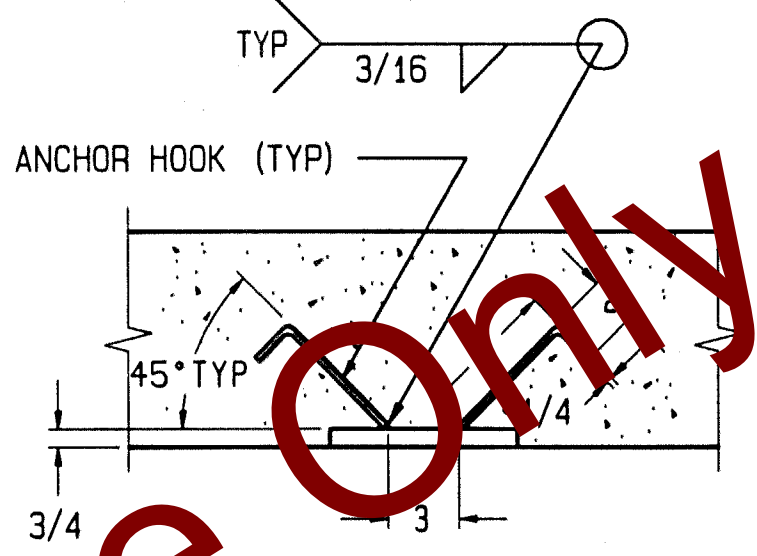
DETAIL "L"
ANCHOR LOCATIONS
(OTHER SIDE IS OPPOSITE)



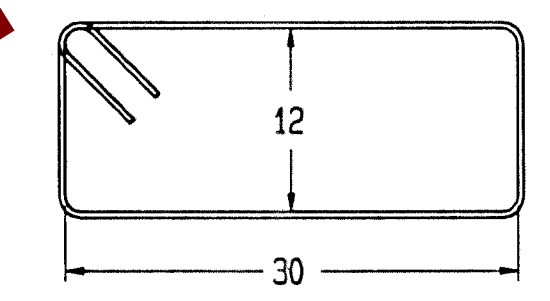
DETAIL "K"
ANCHOR LOCATIONS
(OTHER SIDE IS OPPOSITE)



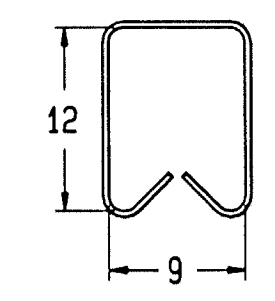
VIEW J-J
BUMPER PLATE ASSY'S (ONE EACH END)
MATERIAL: H.R. STEEL (BY OTHERS)



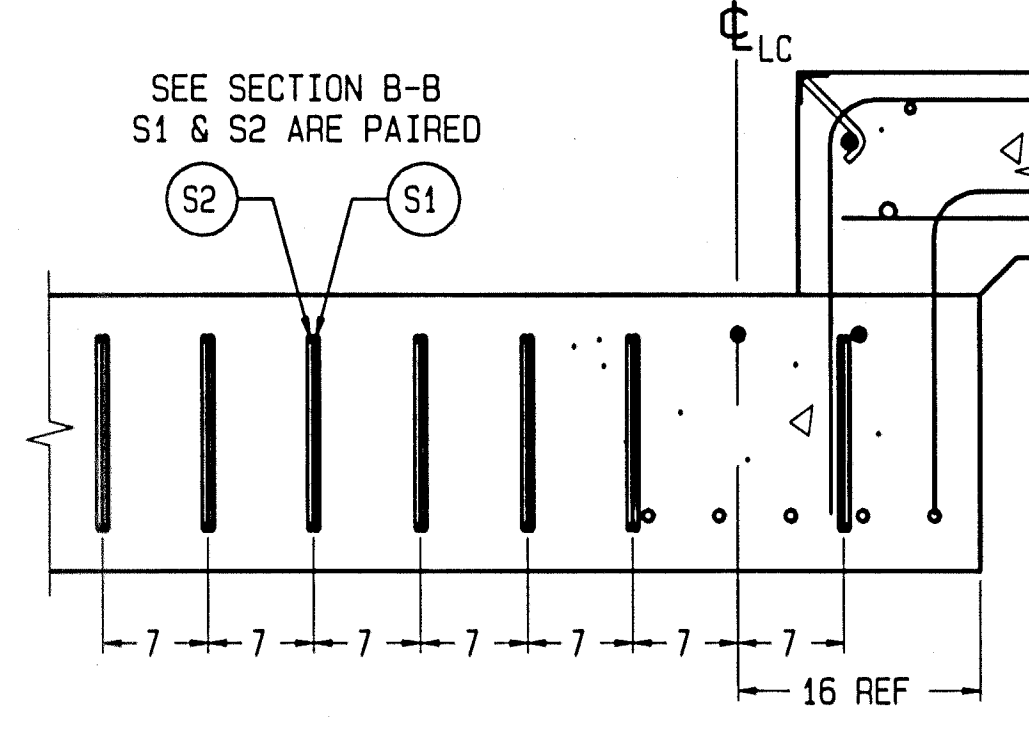
SECTION N-N



DETAIL ITEM S1
AT ANCHOR LOCATIONS
(FORM TO INSIDE DIMENSIONS)



DETAIL ITEM S2
AT ANCHOR LOCATIONS
(FORM TO INSIDE DIMENSIONS)



SECTION S-S
BOTH ENDS OF BOTH MAIN BEAMS
(4 PLACES TOTAL)

REINFORCING STEEL SCHEDULE (A.S.T.M. A-615 GRADE 60)						
COLD FORM BARS TO INSIDE DIMENSIONS						
SYM	QTY	SIZE	LOCATION, DIRECTION	A	B	WGT
ST1	20	#8	FLOOR BEAMS, LONG.	40'-0"		2136
ST2	20	#8	FLOOR BEAMS, LONG.	37'-8"		2011
ST3	8	#7	FOOTERS, LATERAL	11'-0"		180
ST4	10	#5	ENDS, LATERAL	11'-0"		115
	24		APPROACHES, LATERAL			275
ST5	24	#5	APPROACHES, LONG.	9'-6"		238
S1	36	#3	LARGE SHEAR LOOP	8'-0"		109
S2	36	#3	SMALL SHEAR LOOP	4'-6"		61
L1	24	#5	APPROACH TO END TIES	2'-4"	2'-2"	113
L2	24	#5	APPROACH TO END TIES	1'-10"	1'-8"	88

L1 & L2 GIVEN WITHOUT RISER BASEPLATES. DIMENSION "B" WILL VARY WITH THE ACTUAL HEIGHT OF RISERS USED, AS FOLLOWS:

	L1	L2
NO RISERS	2'-2"	1'-8"
3" RISERS	2'-5"	1'-11"
6" RISERS	2'-8"	2'-2"

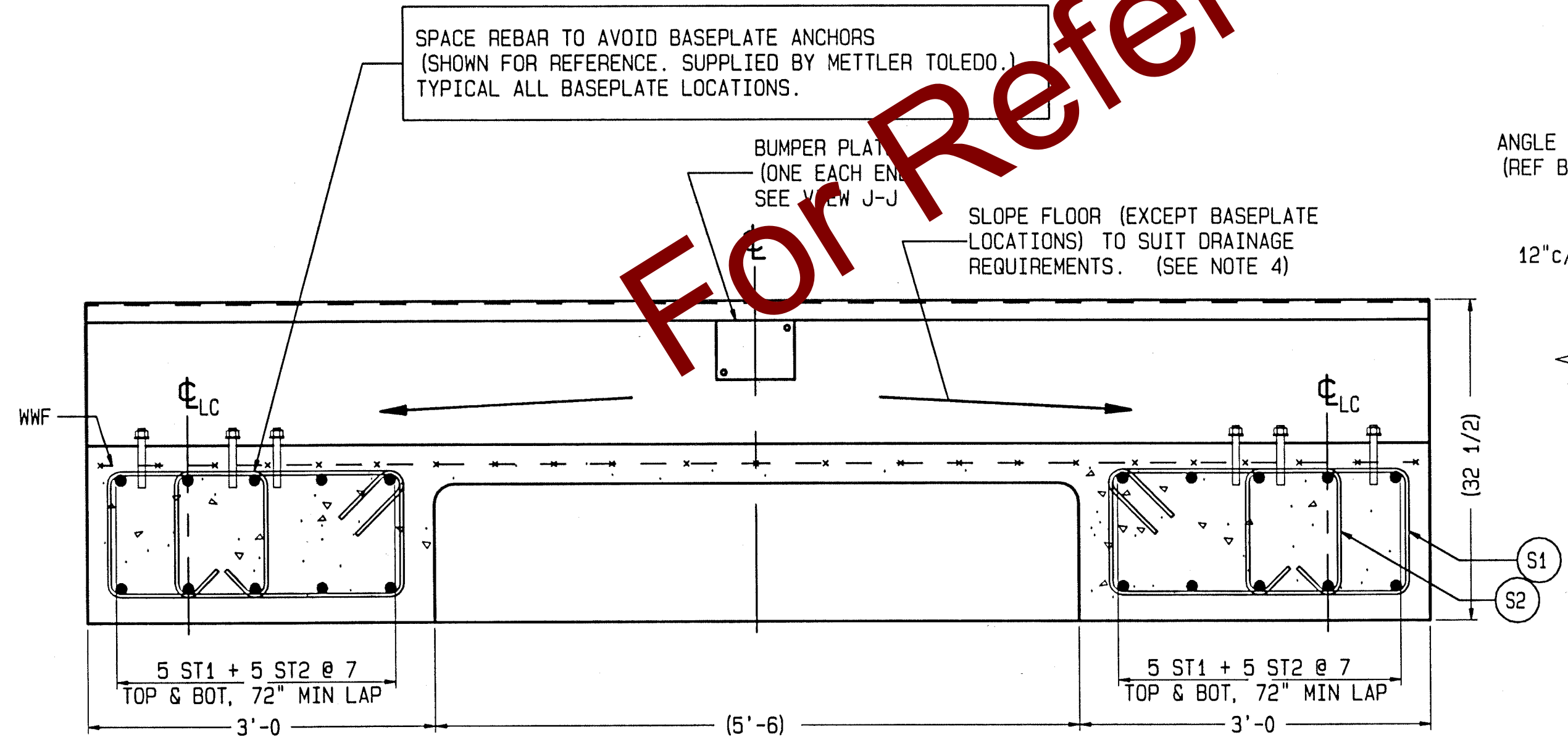
MATERIAL SUMMARY	
CONCRETE (CU. YDS.)	40
REINFORCING STEEL (LBS)	5326
WWF: 6x6_W1.4xW1.4 (SQ. FT.)	850

- NOTES:**
- 1) USE MINIMUM 3000 PSI STRENGTH CONCRETE AT 28 DAYS WITH 5-7% AIR ENTRAINMENT.
 - 2) USE MINIMUM 60KSI YIELD DEFORMED REINFORCING STEEL. REBAR MINIMUM DEPTH OF COVER SHOULD BE IN ACCORDANCE WITH THE LATEST ACI BUILDING CODE REQUIREMENTS FOR STRUCTURAL CONCRETE (ACI 318-SECTION 7.7). UNLESS OTHERWISE SPECIFIED.
 - 3) FOUNDATION REQUIRES 1500 PSF RATED SOIL.
 - 4) TOP OF CONCRETE AT BASEPLATE LOCATIONS TO BE LEVEL AND IN ONE PLANE $\pm 1/8"$.
 - 5) DIAGONAL MEASUREMENTS ENDWALL TO ENDWALL MUST BE EQUAL WITHIN $1/2"$.
 - 6) BASEPLATES ANCHORS TO BE SUPPLIED BY METTLER TOLEDO. USE BASEPLATES AS TEMPLATES TO LOCATE ANCHORS DURING SCALE INSTALLATION.
 - 7) RAMP LENGTH: -PER LOCAL REGULATIONS
-1/2" SLOPE PER FOOT TYPICAL
 - 8) CONTRACTOR SUPPLIES:
 - EXCAVATION
 - REINFORCING STEEL
 - CURB ANGLE ASSEMBLIES (VIEW J-J & N-N)
 - CONCRETE AND FORMS
 - 1 1/2" DIA CONDUIT
 - BUMPER PLATE ASSEMBLIES (VIEW J-J & N-N)

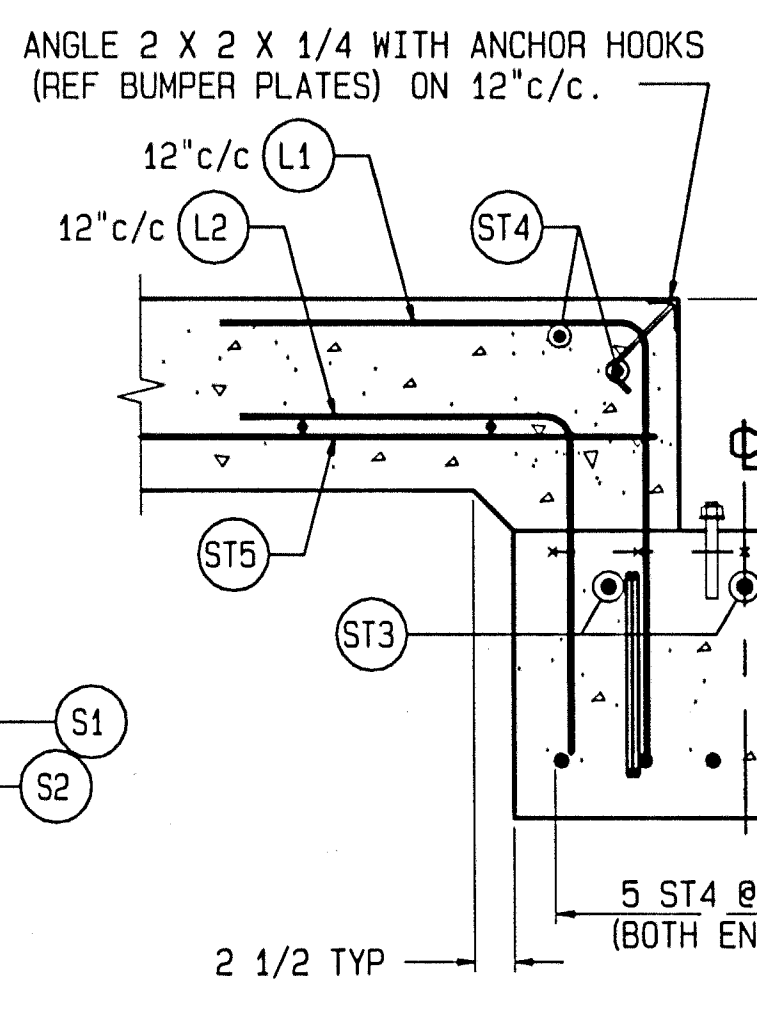
DRAWING IS TO SCALE ONLY WHEN BORDER MEASURES 22-7/8" X 35" (FULL SIZE)

REV	CHANGE	BY	DATE	SCALE	02
A	ADDED RISER OPTION	ADF	12/14/09	DATE	07/22/09
				DRN	ADF
				APPD	ADF
				TITLE	VTC221, FND, BEAM SLAB, 70' X 11' W/ RISER OPTION
				UNLESS OTHERWISE SPECIFIED, ALL DIMENSIONS ARE IN INCHES, AND DIMENSIONAL TOLERANCES ARE:	
				FRACTIONAL	DECIMAL
				1/32	.XX ±.02
					.XXX ±.005
				ANGULAR	±.5°
				TC207747	REV A

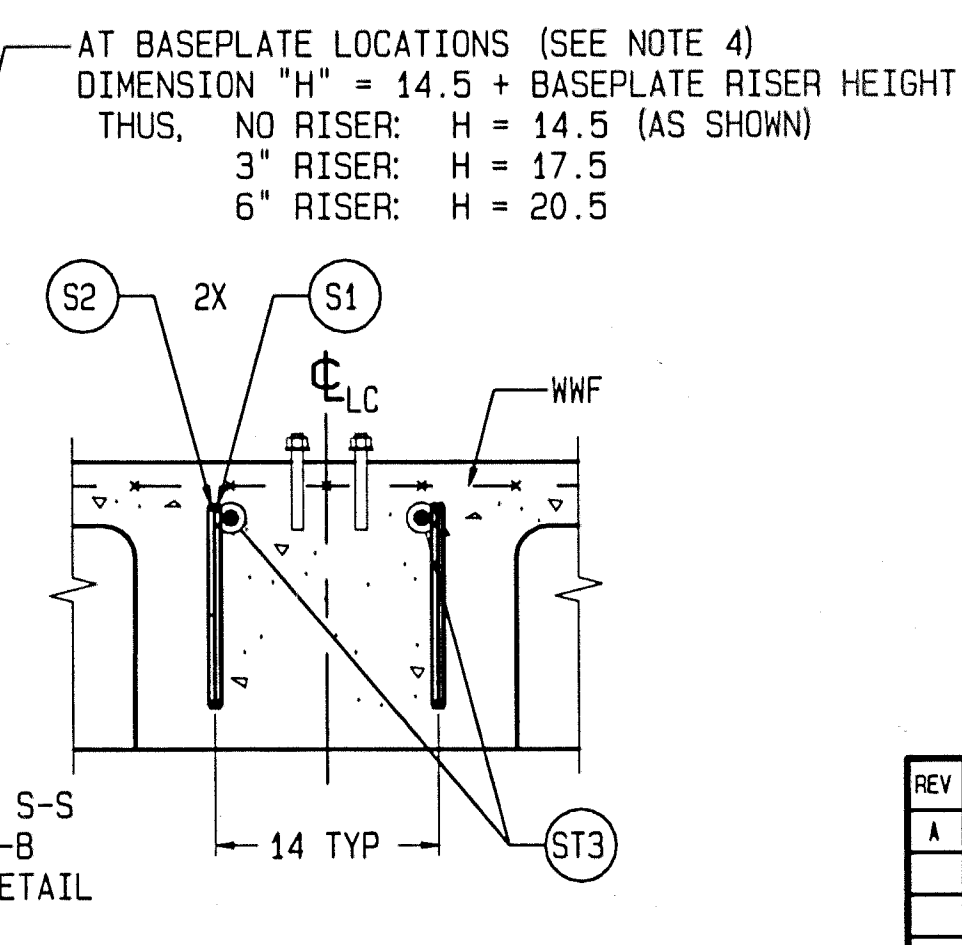
For Reference Only. Not for Construction.



SECTION B-B
SCALE 1/12



SECTION C-C
SCALE 1/12
(TYPICAL END WALL)



SECTION D-D
SCALE 1/12
(TYPICAL FOOTER)
SINGLE BASEPLATE